

Customer Profile

Qatar Chemical Company Ltd (Q-Chem) is a joint venture between Qatar Petroleum Corporation and Chevron Phillips Chemical Company LLC. The Q-Chem facility in Mesaieed Industrial City is a world-class integrated petrochemical plant producing Sulphur, Ethylene, HDPE and 1-Hexene.

Contact Details

Contact Name/Tel./ Email will be available on request.

Project Statement

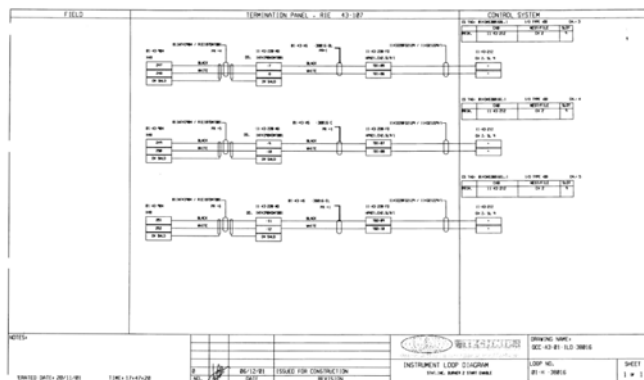
The customer has 5 different INtools databases in version 06.00.04.09 which is required to be merged back into a single database and upgrade the database to SPI also conversion of 2915 loops in merged database and importing the P & ID drawings numbers from Q_CHEM SPP&ID Conversion project.

Rolta Solution

Rolta has provided the following solution architecture to cater to Q-chem. requirements.

1. Intergraph's SmartPlant Instrumentation version 7 SP-6
2. Intergraph's SmartPlant Instrumentation merger utility version 7 SP-6
3. Enhance report Utility version 7 SP-6
4. SPI Import Utility version 7 SP-6

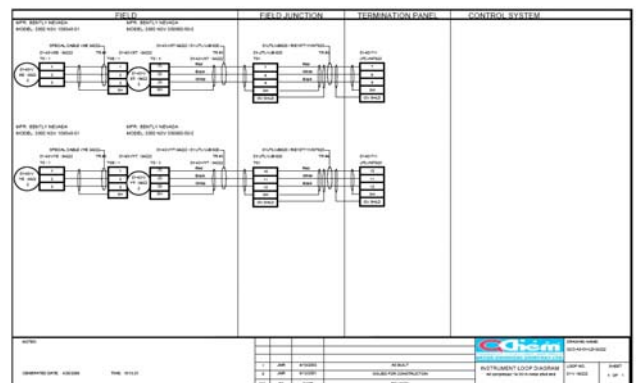
While SPI 7 SP-6 is the used to populate all the data, Intergraph's SmartPlant Instrumentation merger utility is used to merge 5 different databases in to single seed database. The enhance report utility is used to extract 2000 loops created in merged SPI database. SPI Import Utility is used to import P & ID drawings numbers from Q_CHEM SPP&ID Conversion project.



Solution Architecture

The solution has been divided into the following phases:

1. Verification of input databases for duplication of information in 6 different databases also verification of 2000 loop inputs
2. Merging of Five (5) INtools Databases in to One Seed Database File of version 7.6
3. Identification of loops having similar Layout / Template.
4. Wiring and ESL generation in INtools
5. QA and QC checks on the merged database using automated tools and scripts developed.



The Project

The scope of work consists is the conflation of six (6) INtools databases as well as conversion of 2000 loop diagrams and importing the P & ID drawings numbers from Q_CHEM SPP&ID Conversion project. Also person deputed on-site for setting up of the project at client site and troubleshooting or minor modification in the database.

1. Basic in puts for conversion are: Five (5) nos of INtools Databases (Ver. 6.04) & One Seed Database File (Ver.7 SP-6)
2. As build Loop Drawing

Deliverables

1. SmartPlant Instrumentation DB in Watcom version 7 SP-6, which includes. 2915 SmartLoop / Enhanced Smart Loops
2. Soft copy of ESL (SMA File) for 2915 Loops
3. List of Exceptions

Benefits to the Customer

The Customer reaps substantial benefits by merging 5 different databases in to a single database and 2915 enhance smart loops also populating P&ID drawing references from SmartPlant P&ID.